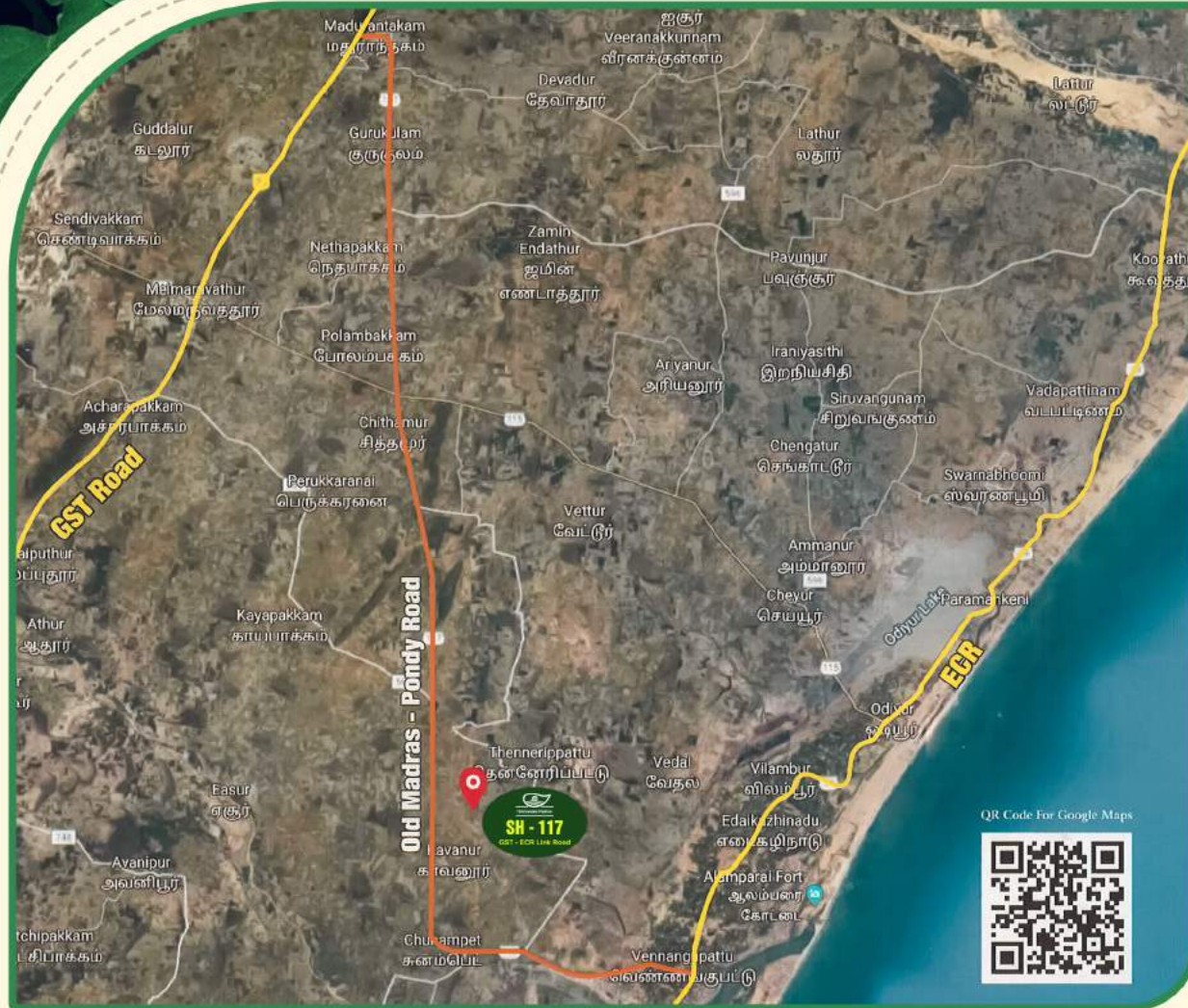




• Srinivasa Palms •

SH - 117
GST - ECR Link Road

PLANT YOUR FUTURE



WHERE ARE WE LOCATED?

SRINIVASA PALMS IS IDEALLY LOCATED IN KALPPATTU VILLAGE,
NEAR ECR JUST OFF THE OLD MADRAS - PONDY ROAD (SH 117).

KALPPATTU IS A SERENE VILLAGE KNOWN FOR ITS FERTILE AGRICULTURAL
LANDS AND COPIOUS WATER BODIES.



For Booking Call :

93828 93828

Office : No.1/1, Sakthi Nagar, 2nd Street, Choolaimedu,
Chennai - 600 094 / Ph : 044 4354 0080/89
www.stepsstone.net

